

Z-MAX® 6A Shielded Patch Panels

Regional Availability - Global

Z-MAX 6A shielded patch panels provide unprecedented performance and reliability in a high-density modular solution. These complete patch panel kits combine 19 inch shielded patch panels with Z-MAX 6A shielded panel outlets to offer the industry's highest performing category 6A patching solution.

The Z-MAX shielded patch panels facilitate a world-class installation for data centers and telecommunications rooms by offering an attractive appearance combined with flexible labeling and color coding options.

These panels also accelerate installation through quick-snap module insertion and automatic grounding of modules via an embedded grounding conductor. The panel allows the ground lug connections on either side of rear panel for connection to the site grounding system. This complete shielding solution provides maximum protection from outside interference and superior alien crosstalk mitigation. Panels are offered in flat and angled styles with fixed or removable rear cable managers.

Additional space is provided for custom user labeling

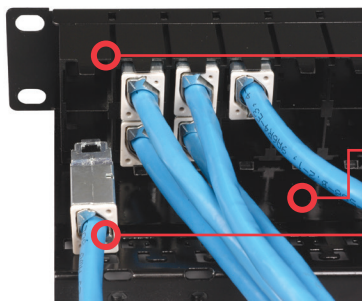
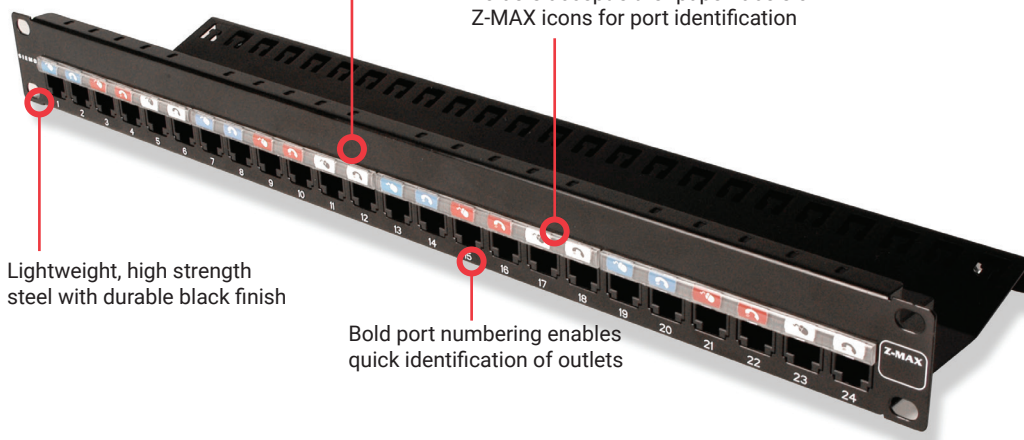
High visibility snap-on magnifying label holders accept either paper labels or Z-MAX icons for port identification

Lightweight, high strength steel with durable black finish

Bold port numbering enables quick identification of outlets

Standards Compliance

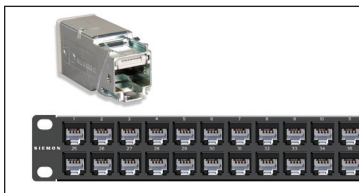
- ANSI/TIA-568.2-D
- ISO/IEC 11801-1 Ed 1.0
- ETL Tested
- IEC 60603-7
- IEC 60603-7-51
- IEEE 802.3an
- IEEE 802.3af (Type 1 PoE)
- IEEE 802.3at (Type 2 PoE)
- IEEE 802.3bt (Type 3 PoE)
- IEEE 802.3bt (Type 4 PoE)
- Power over HDBaseT (PoH)
- ANSI/TIA-1096-A



A quick-release lever allows individual modules to be easily removed even in high density applications

Rear cable manager ensures proper cable management practices for all installations, critical to Category 6A performance

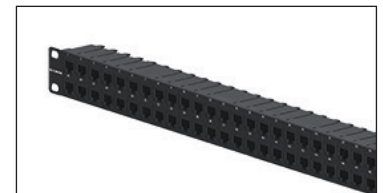
Panel outlets easily snap into place and are automatically connected to ground lug without additional steps



Panels may be ordered as complete kits which include the patch panel and Z-MAX panel modules



Leverage the quick-snap design by combining Z-MAX trunk assemblies with empty Z-MAX patch panels



High density version provides 48 ports in just 1U to reduce valuable rack space consumption

Product Information

Performance Specification Chart

Mechanical - Panel

Operating Temperature	-10 to 60 °C (14 to 140°F)	Dimensions (LxWxH)	109.2mm x 482.6mm x 44.2mm (4.3 x 19.0 x 1.74 in.)
Flammability Rating	UL 94 V-0	Mounting	CEA-310-E 19 in. (482.6mm) rack
Green Features	RoHS, lead-free, halogen-free, PVC free	Material - Panel	18 gauge cold rolled steel, black e-coat
Plastic Materials	Flame retardant thermoplastic	Ground Lug Attachment	3/8" threaded PEM nut both sides (washers and ground screw included)

Ordering Information

Panels with Removable Rear Wire Manager

Part Number	Description
Z6AS-P(X)-24	Z-MAX 24-Port, CAT 6A Shielded patch panel kit with removable wire manager, 1 U, Black, with Outlets
Z6AS-P(X)-48	Z-MAX 48-Port, CAT 6A Shielded patch panel kit with removable wire manager, 1 U, Black, with Outlets
ZS-P(X)-24	Z-MAX 24-Port Shielded patch panel with removable wire manager, 1U, Black, Empty
ZS-P(X)-48	Z-MAX 48-Port Shielded patch panel with removable wire manager, 1U, Black, Empty

Use (X) to specify Panel Style: F = flat, A = angled

Panels with Fixed Rear Wire Manager

Part Number	Description
Z6AS-PNL(X)-24K	Z-MAX 24-Port, CAT 6A Shielded Patch Panel, Kit, 1 RMS, Black, with Outlets
Z6AS-PNL(X)-U48K	Z-MAX 48-Port, CAT 6A Shielded Patch Panel Kit, 1 RMS, Black, with Outlets
ZS-PNL(X)-24E	Z-MAX 24-Port Shielded Patch Panel, 1RMS, Black, Empty
ZS-PNL(X)-U48E	Z-MAX 48-Port Shielded Patch Panel, 1RMS, Black, Empty

Use (X) to specify Panel Style: Blank = flat, A = angled

Panels Include: cable ties, label / icon holders, labels, #12 AWG grounding lug, and mounting hardware

Panel Accessories

Part Number	Description
Z-PNL-PL24	Perforated label sheets for 24-port panels, blank on one side and numbered 1 to 24 on other. 7 sheets for up to 112 panels.
Z-PNL-PL48	Perforated label sheets for 48-port panels, blank on one side and numbered 1 to 48 on other. 14 sheets for up to 112 panels.
Z-PNL-PS	Patch panel label holder, bag of 25 (6-port wide)
Z6A-SP	Z-MAX Category 6A shielded panel outlet
Z-BL-01	Z-MAX panel blank, bag of 10. Black rubber. Fits in empty Z-MAX panel opening as well as any RJ-45 port for dust protection
PNLA-CVR-01	Angled panel cover, black
Z-TOOL	Z-MAX termination tool*

Panels include Z-Tool*, label / icon holders, designation labels, cable ties, grounding lug and mounting hardware.

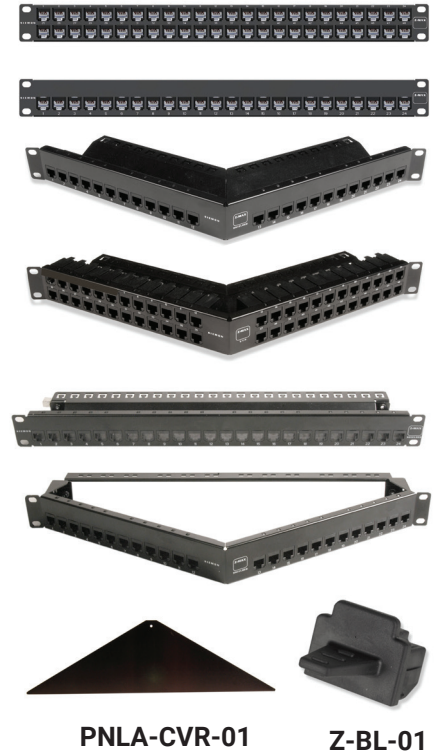
Note: 1U = 44.5mm (1.75 in.)

*Included in panel kit only

Termination technique may vary. See product instructions for details



Note: Z-MAX Shielded panels are designed for use with Z-MAX Shielded panel outlets only, for more information on panel outlets please reference outlet specifications sheet.



PNLA-CVR-01

Z-BL-01

Because we continuously improve our products, Siemon reserves the right to change specifications and availability without prior notice.

North America P: (1) 860 945 4200	Asia Pacific P: (61) 2 8977 7500	Latin America P: (571) 657 1950/51/52	Europe P: (44) 0 1932 571771	China P: (86) 215385 0303	India, Middle East & Africa P: (971) 4 3689743
---	--	---	--	-------------------------------------	--

Siemon Interconnect Solutions

P: (1) 860 945 4213
www.siemon.com/SIS