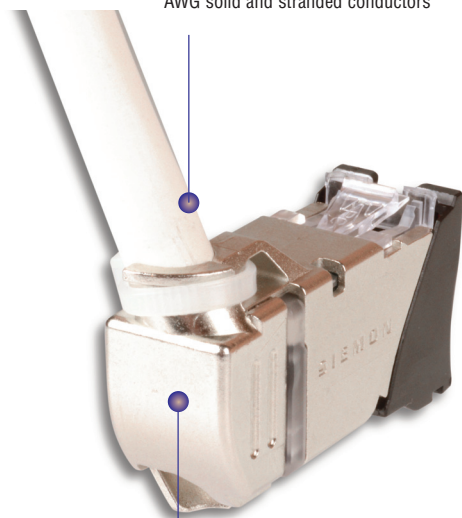


Z-MAX® 45 Category 6A Shielded Outlet

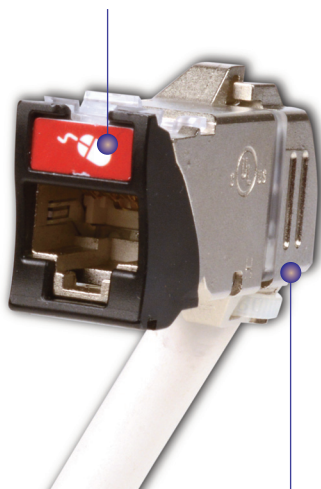
Siemon's patented Z-MAX 45 shielded Category 6A outlet offers a shorter, compact design and the ability to terminate cable at a 45-degree angle for easier exiting of cable from shallow back boxes or wall-mounted raceway systems, while maintaining proper bend radius of the cable. The Z-MAX 45 offers the same best-in-class performance you've come to expect from Siemon's family of Z-MAX products, exceeding all Category 6A performance requirements, including alien crosstalk. The innovative linear lacing features and tool enable fast terminations, while removing installation variability for consistent, repeatable performance.

Multiple Cable Types — Z-MAX 45 Outlet terminates cable constructions with 22 – 26 AWG solid and stranded conductors



Configurable Termination Positions — Cable can be terminated to exit outlet at a 45-degree angle in two different directions to accommodate cables entering from the side, top or bottom in raceway or back boxes

High-Visibility Icon System — Provide designation for voice / data applications and color coding

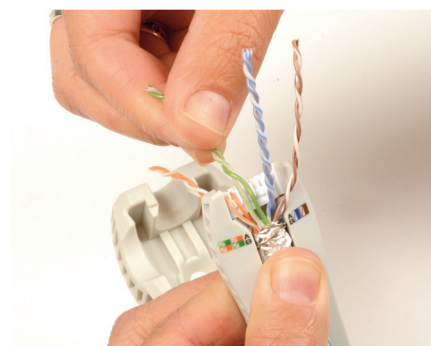


Enhanced Shielding Effectiveness — High level of shielded effectiveness exceeds ISO 360-degree shielded requirements via durable diecast housing and rear ground cap for enhanced support of high frequency data rates



Contact Integrity

Featuring Siemon's patented crowned jack contact geometry that improves electrical and mechanical performance and ensures that any jack or plug contact damage due to arcing caused by unmating under PoE load occurs well away from the final mated contact position.



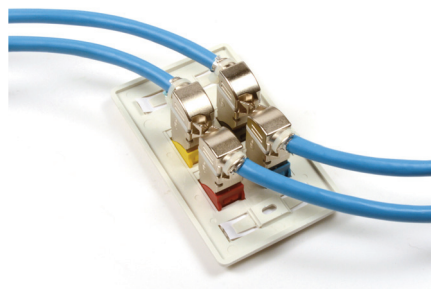
Fast Repeatable Terminations

Linear lacing channels and the tool's color-coded guide ensured correct conductor placement and offers a best-in-class termination time and repeatable performance.



Compact Hybrid Design

Shorter outlet body with 45-degree termination reduces depth by 40% compared to standard outlets to accommodate shallow back boxes without exceeding bend radius and the hybrid design supports both flat and angled mounting orientations.



Slim and Side Stackable

Unlike 90-degree side entry outlets, the 45-degree angle of the Z-MAX 45 enables side stacking for high density applications, while the plastic bezels prevent contact between metal housings for superior alien crosstalk performance.

COMPLIANCE

- ANSI/TIA-568-2.D
- ISO/IEC 11801
- IEC-61156
- IEC 60603-7
- UL 2043 & UL 1863

APPLICATIONS SUPPORT

- 10BASE-T to 10GBASE-T
- IEEE 802.3af (Type 1 PoE)
- IEEE 802.3at (Type 2 PoE)
- IEEE 802.3bt (Type 3 PoE)

PRODUCT INFORMATION

Performance Specifications:

ELECTRICAL SPECIFICATIONS

Contact Resistance (mated)	20 mΩ
Input to Output Resistance	200 mΩ (single conductors), 100mΩ (shield)
Min. Dielectric Withstand Voltage (contact to contact)	1000 VAC contact to contact, 1500 VDC contact to shield
Insulation Resistance	500 MΩ
Compatibility	Backwards to cat 5e and cat 6
Current Rating	1.5 A
PoE	PoE Type 1,2,3

MECHANICAL - GENERAL

Operating Temperature	-10 to 60 °C (14 to 140 °F)
Flammability Rating	UL 94 V-0
Green Features	RoHS, lead-free, halogen-free, PVC free
Housing Material	Zinc die cast
Contact Material	Copper alloy, plated with 50 microinches (1.27 micron) minimum thick gold or equivalent at contact interface
Plastic Material	Flame retardant thermoplastic
Dimensions (LxWxH)	43.8 x 14.5 x 21.0mm (1.72 x 0.57 x 0.83 in.)
Shield	360 degree enclosure

MECHANICAL - JACK

Number of Plug Insertion Cycles	2500
Min. Plug Retention Force	50N (11.24 lbf)
Plug Compatibility	Compatible with RJ45 (8-position) or RJ11 (6-position) plugs

MECHANICAL - TERMINATION

Wire Size Range (nominal)	22 - 26 AWG solid and stranded
Wire Insulation Diameter Range (max)	1.60mm (0.063 in.)
Conductor OD Size (max)	0.65mm (0.026 in.)
Cable OD (max)	9mm (0.354 in.)
Reterminations	5
Wiring	T568A/B

Each Z-MAX 45 outlet includes 1 printed icon set with the following color/print options.



Front



Rear

- 1 - Red Data
1 - Blue Data
1 - Bezel Color-Matching Data
1 - White Blank
- 1 - Red Voice
1 - Blue Voice
1 - Bezel Color-Matching Voice
1 - Bezel Color-Matching Blank



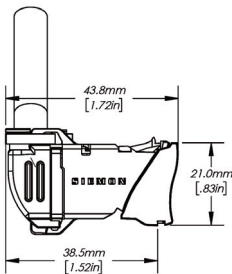
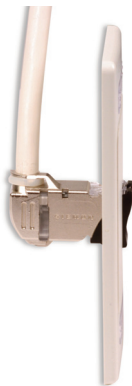
Spring Door Option
Minimizes exposure to dust and other contaminants.

Ordering Information:

Z-TOOL-45 Z-MAX 45 Termination Tool
Z6A-45-S(X)(XX)(X) Z-MAX 45 6A shielded outlet, T568A/B

Mounting Style	Bezel Color	Door Option
(Blank) = Hybrid Flat/Angled K = Keystone	01= Black 02= White 03= Red 04= Gray 05= Yellow 06= Blue 07= Green 09= Orange 20= Ivory 80= Light Ivory	(Blank) = No Door D = Door (Hybrid only)

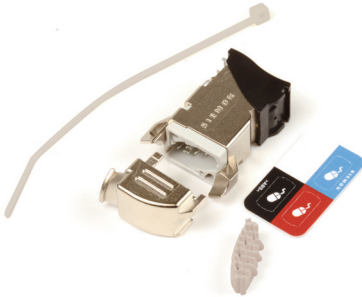
ⓑ Add "B" to end of part number for bulk project pack of 100 modules. Z-Tool-45 Termination Tool is included with quantities of 50 or more outlets or with any of bulk (B) order



Hybrid Flat/Angled
Version Shown



Z-Tool-45
Z-MAX 45 Termination Tool



Because we continuously improve our products, Siemon reserves the right to change specifications and availability without prior notice.

Worldwide Headquarters
North America
Watertown, CT USA
Phone (1) 860 945 4200

Regional Headquarters
Europe Russia Africa
Chertsy, Surrey, England
Phone (44) 0 1932 571771

Regional Headquarters
China
Shanghai, P.R. China
Phone (86) 215385 0303

Regional Headquarters
Latin America
Bogota, Colombia
Phone (571) 657 1950/51/52

Regional Headquarters
India Middle East
Dubai, United Arab Emirates
Phone (971) 4 3689743

Regional Headquarters
Asia Pacific
Sydney, Australia
Phone (61) 2 8977 7500

Siemon Interconnect Solutions
Watertown, CT USA
Phone (1) 860 945 4213 US
www.siemon.com/SIS

